

BENTHIC MACROINVERTEBRATES

Benthic Macroinvertebrates are found in streams, rivers, ponds, and lakes as they spend either a part or entire life cycle in the waters. Macroinvertebrates can also determine the health of the stream since they have different tolerance to water contamination levels. By sampling what types of macroinvertebrates are found and how many there are, the health of the stream will be determined.

COMMON NAME

Scientific Name (Order)

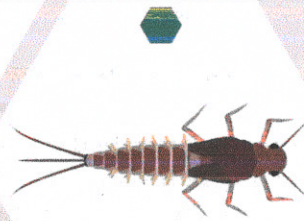
● Pollution Intolerant

● Pollution Sensitive

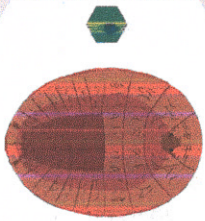
● Pollution Tolerant



CADDISFLY LARVA
Trichoptera



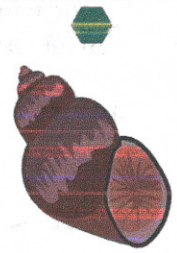
MAYFLY NYMPH
Ephemeroptera



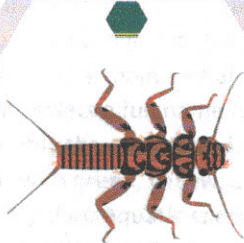
WATER PENNY BEETLE
Coleoptera



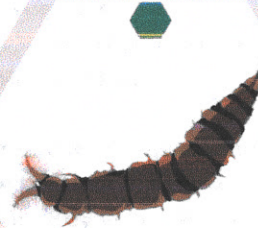
RIFFLE BEETLE
Coleoptera



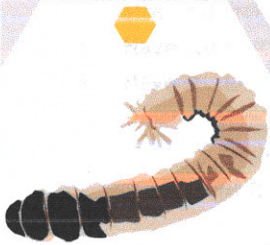
GILLED SNAIL
Mollusca



STONEFLY NYMPH
Plecoptera



WATERSNIPE FLY LARVA
Athericidae



CRANE FLY LARVA
Tipulidae



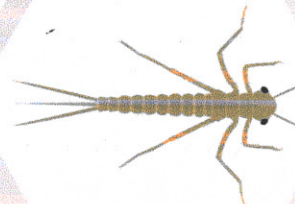
DOBSONFLY LARVA
Megaloptera



SCUD
Amphipoda



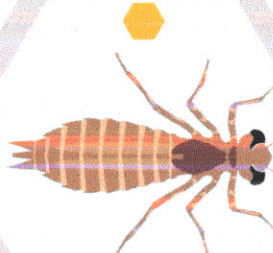
CLAMS & MUSSELS
Mollusca



DAMSELFLY NYMPH
Odonata



CRAYFISH
Decapoda



DRAGONFLY LARVA
Odonata



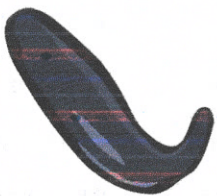
NET-SPINNING CADDISFLY LARVA
Trichoptera



SOWBUG
Isopoda



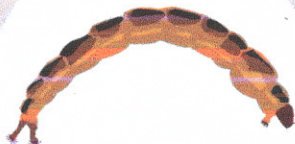
ALDERFLY LARVA
Megaloptera



LEECH
Hirudinea



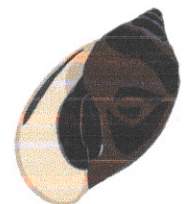
AQUATIC WORM
Annelida



MIDGE LARVA
Chironomidae



BLACKFLY LARVA
Simuliidae



LUNGED SNAIL
Mollusca

* illustrations are not to scale